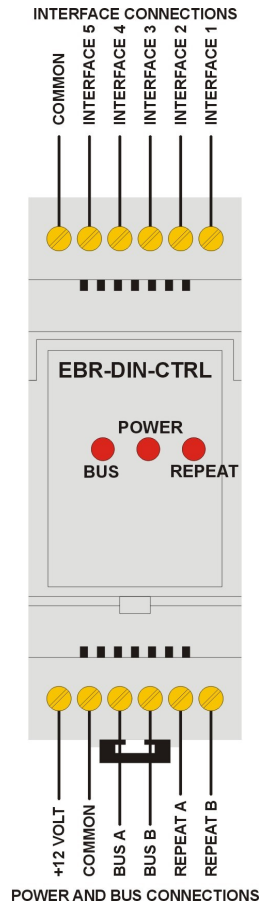
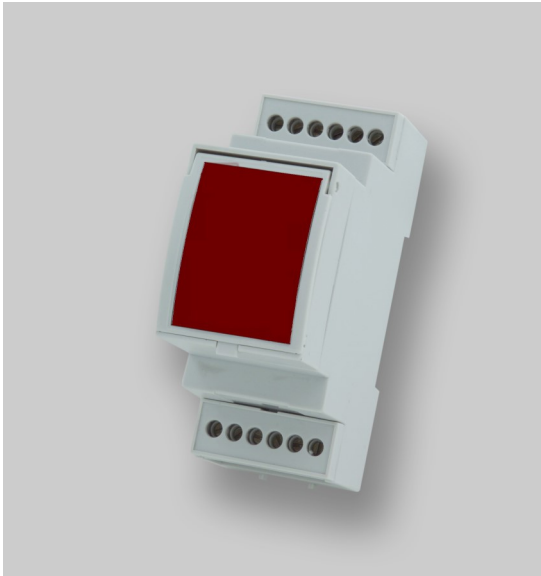


EBR-DIN-CTRL

RAPID Area Control Module

Overview



The Rapid Lighting Control System area controller comprises a number of DIN rail mounted control modules (EBR-DIN-CTRL) powered by one or several power supply modules (EBR-DIN-PSU). The EBR-DIN-CTRL module provides the following functions:

- Backbone control—routes and filters messages between floors and to the PC front end
- Bus control—sends status messages; repeats and filters messages between bus segments
- Interface—provides a six channel interface for time clocks, emergency test switches etc.

Three LEDs are visible through the front window to show power on and to indicate bus activity.

Installation and Wiring

- Install the module in a suitable housing. This unit is compatible with standard DIN rail enclosures
- Wire as in the diagram opposite
- A full system diagram can be found overleaf

Commissioning

Commissioning will normally be performed by our trained commissioning engineers.

Please note that prior to commissioning, it is the responsibility of the installing contractor to ensure the following:

- The area control box must be installed and connected
- Mains power must be available
- Bus connections to the floor and backbone must be installed and checked

The module should be set up using our infrared programming handset or computer front end as part of the system commissioning. For programming details see the separate programming document.

Note: to accept a programming command from the programming handset, the internal push switch must be pressed first.

Specification

SUPPLY VOLTAGE	12VDC
TERMINAL CAPACITY	1.5mm ²
MATERIAL	Flame retardant polycarbonate
TEMPERATURE	-10°C to 35°C
CONFORMITY	EMC-2014/30/EU LVD-2014/35/EU

For further compliance information visit www.cpelectronics.co.uk/compliance

Part Numbers

EBR-DIN-CTRL Rapid area controller

IMPORTANT NOTICE!

This device should be installed by a qualified electrician in accordance with the latest edition of the IEE wiring regulations.



